

Next-generation 12-48V Heated Glass

Full homogeneous heating technology for quick defrosting windscreens

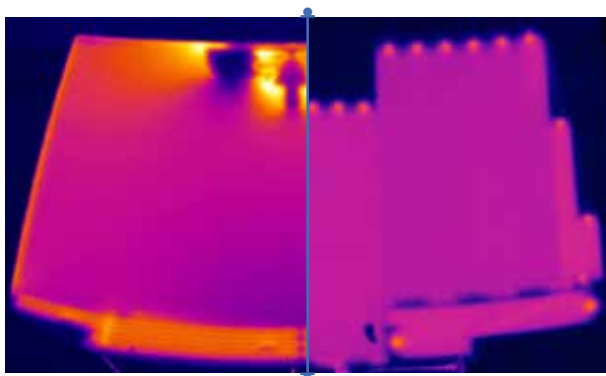
DK delivers advanced low voltage technology, optimized for winter and summer conditions with our patented **Hot Cool Mirror Coating**. Focused on modern EV and hybrid architectures, this solution transforms glazing into an **active thermal system including IR block**. Hot spots are eliminated by an in-house developed heating design by channeling the IR coating. This technology may reduce/eliminate HVAC based defrosting, saving energy.

Benefits

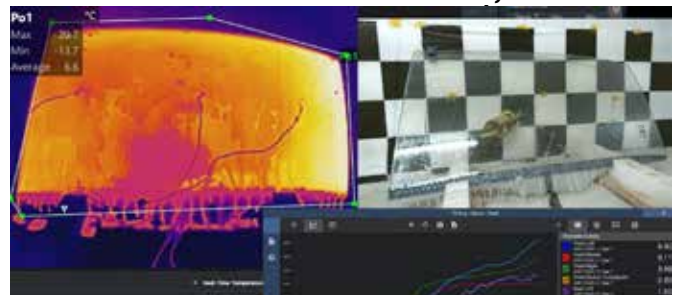
- Glass bending without the needs of a dedicated glass factory, bending can be done on conventional equipment. Both on surface 2 or 3 and currently under development even on surface 1 and 4.
- Nearly invisible smart designed heating networks eliminate thermal stress in glass more cost efficient than Tungsten wiggle wiring.
- HCMC is suitable for all glass positions, even for sunroofs.
- Heated surface down to 2mm from the edge enabling door rubber defrosting.
- Suitable for continuous heating, always on/standby, no button needed.
- Enabling low cost prioritized heating for wipers and ADAS areas.
- Instant passenger comfort by radiative heating.
- Single-side busbar connections allows having all connectors on one side/below the door-beltline.
- Reduced temperature of busbar regions.

Performance

- Reduced size of HVAC results in increased EV range.
- Defogging - defrosting up to six times faster compared to standard HCW.
- Up to 90% reduction in defrost energy vs HVAC (with Betterfrost pulsed powering).
- Glasses can be used as infrared panels which enables faster cabin comfort.



Defrost Test –FMVSS103 at -20C, 0.5mm Ice



At 120 seconds, icelides off glass.

Heated coated windscreen vs Hot Cool Mirror Coating Hot Cool Mirror coated doorglass